

Competition Rules

The competition is open to anyone, including non-UK residents, except Magma Poetry Board members and their families.

Poems may be on any subject, and must be in English and your own original work. They must not have been published, self-published or accepted for publication in print or online, broadcast, or have won or been placed in another competition at any time.

PRIZES:

Magma Judge's Prize for a poem of 11-50 lines awarded by Victoria Kennefick, who will read all eligible entries.

1st prize £1000; **2nd prize** £300; **3rd prize** £150.
5 special mentions.

Magma Editors' Prize for a poem of up to 10 lines awarded by a panel of Magma editors.

1st prize £1000; **2nd prize** £300; **3rd prize** £150.
5 special mentions.

The competition is open for entries from **15 October 2022 to 31 January 2023**.

ENTRY FEES AND PAYMENT:

You may submit as many poems as you like, accompanied by the appropriate fee. The entry fees are £5 for the first poem, £4 for the second and £3.50 for the third and each subsequent poem. Magma subscribers benefit from reduced fees, £4 for the first poem, £3 for the second, and £2.50 for the third and each subsequent poem. Payment must be made in sterling, by cheque or money order payable to "Magma Poetry" for postal entries, and via PayPal for online entries. (PayPal can process payments by cards as well as from PayPal accounts.)

ONLINE ENTRIES:

Visit www.magmapoetry.com/competition, where you will be able to upload your poem entries and pay the appropriate entry fee securely via PayPal (see above). Full instructions and conditions for online entries will be found at the point of entry.



POSTAL ENTRIES: Please enclose a completed entry form found either in our competition leaflet, or available to download at www.magmapoetry.com/competition. Each poem must be on a separate sheet. Poems longer than one page must give their title on the second page and the pages should be stapled together. Do not include your name or any other identifying marks on the poems themselves. Send entries to: **Magma Poetry Competition, 1 Winton Avenue, London N11 2AS.**

Payment must be made in sterling, by cheque or money order payable to "Magma Poetry".

GENERAL: No alterations can be made after receipt, nor fees refunded.

The judge's and editors' decisions are final and no correspondence can be entered into. No entrant may win more than one prize in each section.

Should the named judge be unable to proceed, we aim to substitute an alternative judge of equivalent standing as a poet.

Prizewinners will be notified individually in April 2023. The results will also be published on the Magma Poetry website after the prize-giving event.

Copyright of each entry remains with the author, but Magma Poetry has the right to first publication of the winning poems in print and/or online within six months of the competition deadline.

Entry implies acceptance of all the rules. Failure to comply with the rules will result in disqualification.

Magma Poetry is a registered charity, no. 1141075



Supported using public funding by
**ARTS COUNCIL
ENGLAND**

www.magmapoetry.com/competition

magma poetry
Competition
2022/23
DEADLINE
31 January 2023

What's different about this competition?

Magma's Poetry Competition has two contests, one for short poems of up to 10 lines, and one for poems of 11 to 50 lines.

Poems of 11 to 50 lines will be judged by Victoria Kennefick for the Judge's Prize.

Poems of up to 10 lines will be entered for the Editors' Prize and, reflecting Magma's unique rotating editorship, will be judged by a panel of Magma editors.

In addition to receiving cash prizes, winners will be invited to read at Magma's prize-giving event in Spring 2023. The winning six entries will also be published in the magazine.

HOW TO ENTER

The quickest and easiest way to enter is via the Magma Poetry website – see www.magmapoetry.com/competition. You'll be able to upload your poem entries from 15 October 2022 to 31 January 2023, and pay the appropriate entry fee securely by PayPal.

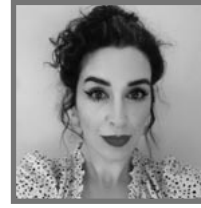
Alternatively, you can post your poems with the completed entry form together with your payment.

The entry fees are £5 for the first poem, £4 for the second and £3.50 for the third and each subsequent poem. Magma magazine subscribers benefit from reduced fees: £4 for the first poem, £3 for the second, and £2.50 for the third and each subsequent poem. Payment must be made in sterling, by cheque or money order payable to "Magma Poetry" for postal entries, and via PayPal for online entries. (PayPal can process payments by card as well as from PayPal accounts.)

To subscribe to the magazine, and to take advantage of the reduced price entry to the competition, visit www.magmapoetry.com/buy-magma. You'll find the latest information about the magazine here, and you'll be able to purchase a subscription online. Alternatively, please send a cheque for £22.00 payable to "Magma Poetry" for a year's subscription (3 issues) to the print magazine, to Magma Distribution, 27 Well Street, Cupar, Fife KY15 4AX.

Magma Judge's Prize

Awarded by Victoria Kennefick
Poems of 11 to 50 lines
1st Prize £1000
2nd Prize £300
3rd Prize £150
Plus five special mentions.



Victoria Kennefick's debut poetry collection, *Eat or We Both Starve* (Carcenet, 2021), won the Seamus Heaney First Collection Poetry Prize 2022 and was awarded the Dalkey Book Festival Emerging Writer of the Year 2022. It has been shortlisted for the Derek Walcott Prize for Poetry 2022. In 2021, it was shortlisted for both the T.S. Eliot Prize and the Costa Poetry Book Award. It was a book of the year in *The Guardian*, *The Irish Times*, *The Telegraph*, *The Sunday Independent* and *The White Review*. Victoria is the current poet in residence at the Yeats Society Sligo.

Magma Editors' Prize

Awarded by Magma editors
Poems of up to 10 lines
1st Prize £1000
2nd Prize £300
3rd Prize £150
Plus five special mentions.

Magma Poetry is known for its unique rotating editorship. Every issue is edited by a different member of the Magma team or an occasional guest editor. A panel of editors, drawn from editors of recent issues of the magazine, will award this prize, which celebrates the short poem. The Magma Editors' Prize will run alongside the Judge's Prize.

Poets will be invited to read at Magma's prize-giving event in Spring 2023.

The winning entries (1st, 2nd and 3rd in the Judge's Prize and 1st, 2nd and 3rd in the Editors' Prize) will also be published in the magazine.

www.magmapoetry.com/competition

magma poetry

ENTRY FORM

Name

Email

Address

Contact number

Number of poem(s) for Judge's Prize (11-50 lines)

Number of poem(s) for Editors' Prize (up to 10 lines)

Title(s) of poem(s) (please mark entries for Judge's Prize with 'J' and Editors' Prize with 'E').

(Write on a separate sheet if you wish to submit more than 5 poems)

Magazine Subscriber [] Non Subscriber []

You may subscribe to the magazine with your entry, either using this form or online via PayPal, and benefit from the reduced entry fees.

Subscribe now [] I enclose payment of £ payable to "Magma Poetry".

Postal entries with payment should be sent to: **Magma Poetry Competition, 1 Winton Ave, London N11 2AS** and be postmarked no later than 31 January 2023.

Would you like to receive our e-newsletters?
YES [] NO []

(We will not share your personal details with any third parties without your consent.)

Thank you for your participation and we wish you good luck with your entry.